

## Marguerite Linke

---

**From:** Bryant, Linda C. <Linda.Bryant@DOS.MyFlorida.com>  
**Sent:** Tuesday, July 19, 2016 4:10 PM  
**To:** Marguerite Linke  
**Cc:** County Ordinances  
**Attachments:** Hernando20160719\_Ordinance2016\_10\_Ack.pdf

**Importance:** High

Here you go, previous letter for 2016-10 , had the incorrect filing date, sorry about that.

The Department of State is committed to excellence.  
Please take our [Customer Satisfaction Survey](#).



## FLORIDA DEPARTMENT *of* STATE

**RICK SCOTT**  
Governor

**KEN DETZNER**  
Secretary of State

July 19, 2016

Honorable Don Barbee Jr.  
Hernando County Clerk's Office  
20 North Main Street, Rm. 3621  
Brooksville, Florida 34601

Attention: Marguerite Linke, Administrative Services

Dear Mr. Barbee:

Pursuant to the provisions of Section 125.66, Florida Statutes, this will acknowledge receipt of your electronic copy of Hernando County Ordinance No. 2016-10, which was filed in this office on July 19, 2016.

Sincerely,

Ernest L. Reddick  
Program Administrator

ELR/lb

1  
2  
3  
4  
5  
6  
7  
8  
9  
10  
11  
12  
13  
14  
15  
16  
17  
18  
19  
20  
21  
22  
23  
24  
25  
26  
27  
28  
29  
30  
31  
32  
33  
34  
35  
36  
37  
38  
39  
40  
41  
42  
43  
44  
45  
46

**ORDINANCE NO.: 2016- 10**

**AN ORDINANCE AMENDING THE HERNANDO COUNTY COMPREHENSIVE PLAN BY AMENDING SECTION E RELATING TO THE FUTURE LAND USE MAP AS AFFECTING 10 ACRES OF LAND GENERALLY LOCATED ON THE NORTH SIDE OF SR 50 WEST OF THE OAK HILL HOSPITAL ENTRANCE; APPROVING AND ADOPTING CPAM-15-02; PROVIDING FOR SEVERABILITY; AND PROVIDING FOR AN EFFECTIVE DATE.**

**WHEREAS**, in 1985, the Florida Legislature adopted the Local Government Comprehensive Planning and Land Development Regulation Act as set forth in §§ 163.3161 through 163.3215 Florida Statutes (the “Act”); and,

**WHEREAS**, on June 7, 1989, the Board of County Commissioners adopted Ordinance 89-9 which adopted the Hernando County Comprehensive Plan, as such Plan or portions thereof have been subsequently amended (“Comprehensive Plan”); and,

**WHEREAS**, the instant request is for the Hernando County Board of County Commissioners (“BOCC”) to amend Section E of the County’s adopted Comprehensive Plan relating to the Future Land Use Map (a complete copy of the amendment is collectively attached as Exhibit “A” hereto and made a part hereof) and hereinafter referred to as CPAM-15-02; and,

**WHEREAS**, CPAM-15-02 is an amendment to the County’s Future Land Use Map involving land that is ten (10) acres or less in size (as generally located at the on the north side of SR 50 west of the Oak Hill Hospital entrance and which has been determined by the Hernando County Planning Department to constitute a “small scale development amendment” based upon the criteria set forth in § 163.3187(1)(c), Florida Statutes; and,

**WHEREAS**, small scale development amendments are exempt from state and regional review pursuant to § 163.3187, Florida Statutes; and,

**WHEREAS**, the BOCC conducted a public hearing on July 12, 2016, in connection with the adoption of CPAM-15-02 as an amendment to the County’s adopted Comprehensive Plan.

**NOW THEREFORE:**

**BE IT ORDAINED BY THE BOARD OF COUNTY COMMISSIONERS OF HERNANDO COUNTY, FLORIDA:**

**SECTION 1.** Recitals. The above recitals are incorporated herein by reference.

**SECTION 2.** Adopting CPAM-15-02. CPAM-15-02, attached as Exhibit “A” hereto, is hereby approved and adopted and the Hernando County Comprehensive Plan Future Land Use Map is amended accordingly, subject to Section 6 below.



**EXHIBIT A**

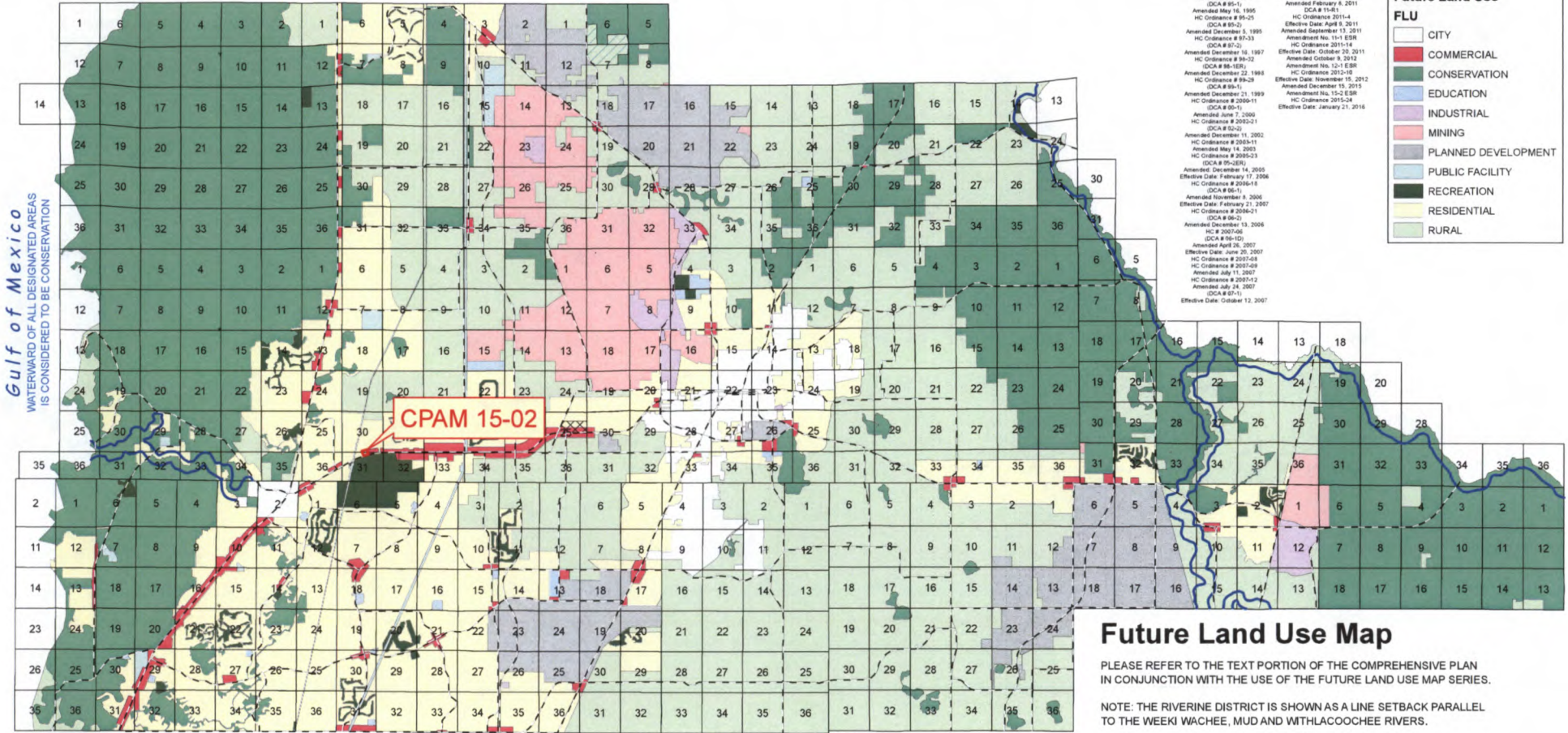
**CPAM-15-02**



# Hernando County Comprehensive Plan Map

Present / Current CPAM 15-02

Version Date: May 12, 2016



Gulf of Mexico  
WATERWARD OF ALL DESIGNATED AREAS  
IS CONSIDERED TO BE CONSERVATION

- Future Land Use Adoption / Amendment History**
- HC Ordinance # 88-9 Adopted June 7, 1988
  - HC Ordinance # 90-21 (DCA # 89-2)
  - Amended November 14, 1990
  - HC Ordinance # 91-12 (DCA # 91-1)
  - Amended October 23, 1991
  - HC Ordinance # 91-38 (DCA # 91-3)
  - Amended December 15, 1991
  - HC Ordinance # 92-9 (DCA # 92-1)
  - Amended July 6, 1992
  - HC Ordinance # 93-21 (DCA # 93-1)
  - Amended December 14, 1993
  - HC Ordinance # 95-7 (DCA # 95-1)
  - Amended May 16, 1995
  - HC Ordinance # 95-25 (DCA # 95-2)
  - Amended December 5, 1995
  - HC Ordinance # 97-33 (DCA # 97-2)
  - Amended December 18, 1997
  - HC Ordinance # 99-72 (DCA # 99-1)
  - Amended December 22, 1998
  - HC Ordinance # 99-28 (DCA # 99-1)
  - Amended December 23, 1999
  - HC Ordinance # 2000-11 (DCA # 00-1)
  - Amended June 7, 2000
  - HC Ordinance # 2002-21 (DCA # 02-2)
  - Amended December 11, 2002
  - HC Ordinance # 2003-11 (DCA # 03-2)
  - Amended May 14, 2003
  - HC Ordinance # 2003-23 (DCA # 03-2)
  - Amended December 14, 2003
  - Effective Date: February 17, 2006
  - HC Ordinance # 2006-18 (DCA # 06-1)
  - Amended November 8, 2006
  - Effective Date: February 21, 2007
  - HC Ordinance # 2006-21 (DCA # 06-2)
  - Amended December 13, 2006
  - HC # 2007-08 (DCA # 07-1)
  - Amended April 26, 2007
  - Effective Date: June 20, 2007
  - HC Ordinance # 2007-08 (DCA # 07-1)
  - Amended July 11, 2007
  - HC Ordinance # 2007-12 (DCA # 07-1)
  - Amended July 24, 2007
  - Effective Date: October 12, 2007
  - HC Ordinance # 2007-22 (DCA # 07-2)
  - Amended December 12, 2007
  - HC Ordinance # 97-22 (DCA # 97-2)
  - HC Ordinance 2008-19
  - HC Ordinance 2009-25
  - Effective Date: August 13, 2008
  - HC Ordinance 2009-08
  - Effective Date: August 14, 2009
  - HC Ordinance 2010-26
  - Amended May 11, 2010
  - Effective Date: July 29, 2010
  - HC Ordinance 2010-28
  - Amended October 12, 2010
  - Effective Date: October 12, 2010
  - HC Ordinance 2010-22
  - Amended October 26, 2010
  - Effective Date: January 6, 2011
  - Amended February 6, 2011
  - HC Ordinance 2011-4
  - Effective Date: April 8, 2011
  - Amended September 13, 2011
  - Amendment No. 11-1 ESR
  - HC Ordinance 2011-14
  - Effective Date: October 25, 2011
  - Amended October 9, 2012
  - Amendment No. 12-1 ESR
  - HC Ordinance 2012-10
  - Amended December 19, 2012
  - Amendment No. 12-2 ESR
  - HC Ordinance 2012-10
  - Amended December 19, 2012
  - Amendment No. 12-2 ESR
  - HC Ordinance 2012-28
  - Effective Date: January 21, 2013

**Legend**

- FLU Road
- FLU Riverine District
- Regional Commercial
- Rural Cluster Overlay

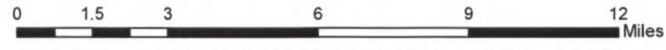
**Future Land Use**

- CITY
- COMMERCIAL
- CONSERVATION
- EDUCATION
- INDUSTRIAL
- MINING
- PLANNED DEVELOPMENT
- PUBLIC FACILITY
- RECREATION
- RESIDENTIAL
- RURAL

## Future Land Use Map

PLEASE REFER TO THE TEXT PORTION OF THE COMPREHENSIVE PLAN IN CONJUNCTION WITH THE USE OF THE FUTURE LAND USE MAP SERIES.

NOTE: THE RIVERINE DISTRICT IS SHOWN AS A LINE SETBACK PARALLEL TO THE WEEKI WACHEE, MUD AND WITHLACOOCHEE RIVERS.



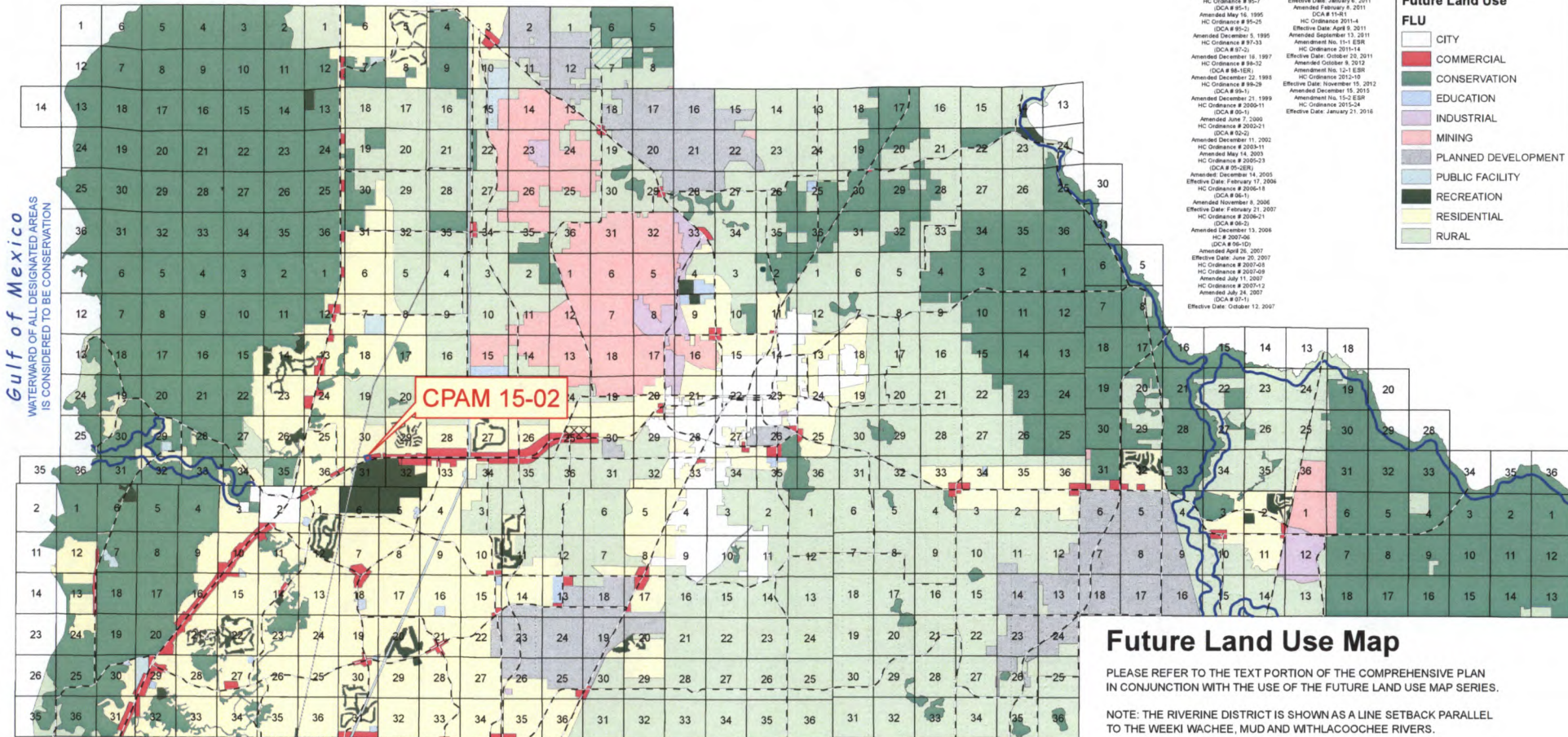
Source: S:\Share\Planning\NewFLU\CPAM1502\_8x11\_Present.pdf  
 Project: S:\Share\Planning\Zoning\ErikL\_Workspace\_S\CPAM Project\CPAM1502\_8x11\_Present.mxd  
 Date of mapping: 5/12/2016





# Hernando County Comprehensive Plan Map

Proposed CPAM 15-02  
Version Date: May 12, 2016



Gulf of Mexico  
WATERSHED OF ALL DESIGNATED AREAS  
IS CONSIDERED TO BE CONSERVATION

- Future Land Use Adoption / Amendment History**
- HC Ordinance # 95-9 Amended December 12, 2007 (DCA # 07-02)
  - Adopted June 7, 1999 HC Ordinance # 90-21 (DCA # 90-2)
  - Amended November 14, 1990 HC Ordinance # 91-32 (DCA # 91-1)
  - Amended October 23, 1991 HC Ordinance # 91-38 (DCA # 91-2)
  - Amended December 19, 1991 HC Ordinance # 92-9 (DCA # 92-1)
  - Amended July 1, 1992 HC Ordinance # 93-27 (DCA # 93-1)
  - Amended December 14, 1993 HC Ordinance # 95-7 (DCA # 95-1)
  - Amended May 16, 1995 HC Ordinance # 95-25 (DCA # 95-2)
  - Amended December 9, 1995 HC Ordinance # 97-33 (DCA # 97-2)
  - Amended December 19, 1997 HC Ordinance # 98-12 (DCA # 98-1E)
  - Amended December 22, 1998 HC Ordinance # 99-28 (DCA # 99-1)
  - Amended December 23, 1999 HC Ordinance # 2000-11 (DCA # 00-1)
  - Amended June 7, 2000 HC Ordinance # 2000-21 (DCA # 00-2)
  - Amended December 11, 2002 HC Ordinance # 2003-11 (Amendment No. 15-C ESR)
  - Amended May 14, 2003 HC Ordinance # 2003-23 (DCA # 03-2E)
  - Amended December 17, 2005 Effective Date: February 17, 2006 HC Ordinance # 2005-18 (DCA # 05-1)
  - Amended November 8, 2006 Effective Date: February 21, 2007 HC Ordinance # 2006-21 (DCA # 06-2)
  - Amended December 13, 2006 HC # 2007-06 (DCA # 06-1D)
  - Amended April 26, 2007 Effective Date: June 20, 2007 HC Ordinance # 2007-08 (DCA # 2007-08)
  - Amended July 11, 2007 HC Ordinance # 2007-12 (DCA # 07-1)
  - Amended July 24, 2007 Effective Date: October 12, 2007 HC Ordinance # 2007-22 (DCA # 07-02)
  - Amended February 29, 2008 HC Ordinance 2008-19 (DCA # 08-2)
  - Amended August 13, 2008 HC Ordinance 2008-20 (DCA # 08-1)
  - Amended July 29, 2010 HC Ordinance 2010-29 (DCA # 10-1)
  - Amended October 12, 2010 Effective Date: October 12, 2010 HC Ordinance 2010-27 (DCA # 10-2)
  - Amended January 6, 2011 Amended February 4, 2011 DCA # 11-4
  - Amended October 13, 2011 Effective Date: April 9, 2011 HC Ordinance 2011-4 (Amendment No. 11-E ESR)
  - Amended October 20, 2011 Effective Date: October 20, 2011 HC Ordinance 2011-14 (Amendment No. 12-E ESR)
  - Amended December 10, 2012 Amended December 15, 2012 Amended No. 15-C ESR HC Ordinance 2012-17 (DCA # 12-1)
  - Amended January 21, 2016 HC Ordinance 2015-24 (DCA # 15-2)

**Legend**

- FLU Road
- FLU Riverine District
- Regional Commercial
- Rural Cluster Overlay

**Future Land Use**

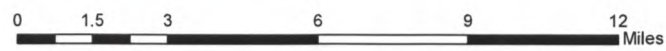
FLU

- CITY
- COMMERCIAL
- CONSERVATION
- EDUCATION
- INDUSTRIAL
- MINING
- PLANNED DEVELOPMENT
- PUBLIC FACILITY
- RECREATION
- RESIDENTIAL
- RURAL

## Future Land Use Map

PLEASE REFER TO THE TEXT PORTION OF THE COMPREHENSIVE PLAN IN CONJUNCTION WITH THE USE OF THE FUTURE LAND USE MAP SERIES.

NOTE: THE RIVERINE DISTRICT IS SHOWN AS A LINE SETBACK PARALLEL TO THE WEEKI WACHEE, MUD AND WITHLACOOCHEE RIVERS.



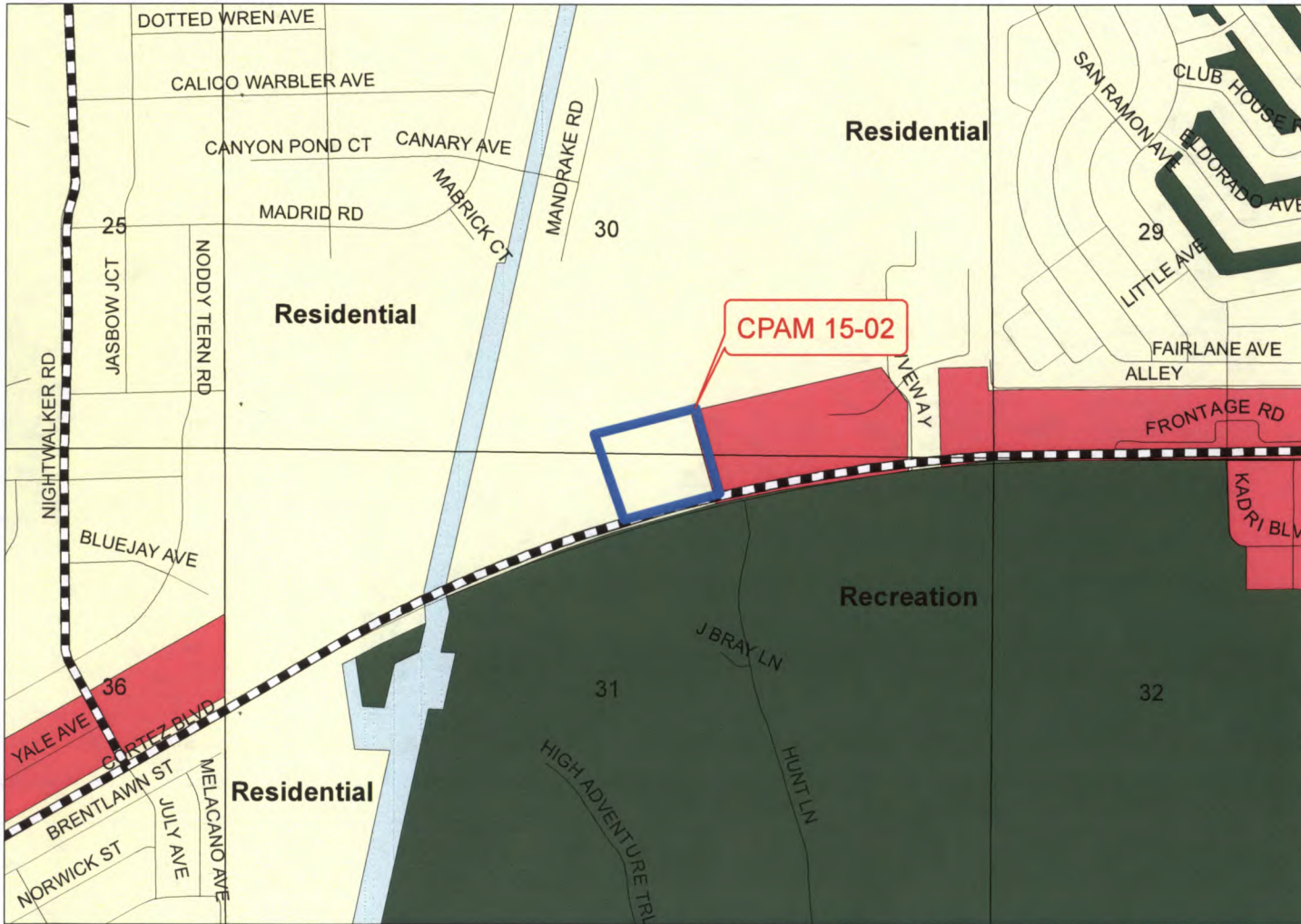
Source: S:\Share\Planning\NewFLU\CPAM1502\_8x11\_Proposed.pdf  
Project: S:\Share\Planning\Zoning\ErikL\_Workspace\_S\CPAM Project\CPAM1502\_8x11\_Proposed.mxd  
Date of mapping: 5/12/2016



# Hernando County Comprehensive Plan Map

Present / Current CPAM 15-02

Version Date: May 12, 2016



## Legend

- FLU Road
- FLU Riverine District
- Rural Cluster Overlay
- Regional Commercial

## Future Land Use

### FLU

- CITY
- COMMERCIAL
- CONSERVATION
- EDUCATION
- INDUSTRIAL
- MINING
- PLANNED DEVELOPMENT
- PUBLIC FACILITY
- RECREATION
- RESIDENTIAL
- RURAL

## Future Land Use Map

PLEASE REFER TO THE TEXT PORTION OF THE COMPREHENSIVE PLAN IN CONJUNCTION WITH THE USE OF THE FUTURE LAND USE MAP SERIES.

NOTE: THE RIVERINE DISTRICT IS SHOWN AS A LINE SETBACK PARALLEL TO THE WEEKI WACHEE, MUD AND WITHLACOOCHEE RIVERS.

0 395 790 1,580 2,370 3,160 Feet

Source: S:\Share\Planning\NewFLU\CPAM1502a\_Detail\_8x11.pdf

Project: S:\Share\Planning\Zoning\ErikL\_Workspace\_S\CPAM Project\CPAM1502a\_8x11\_Detail.mxd

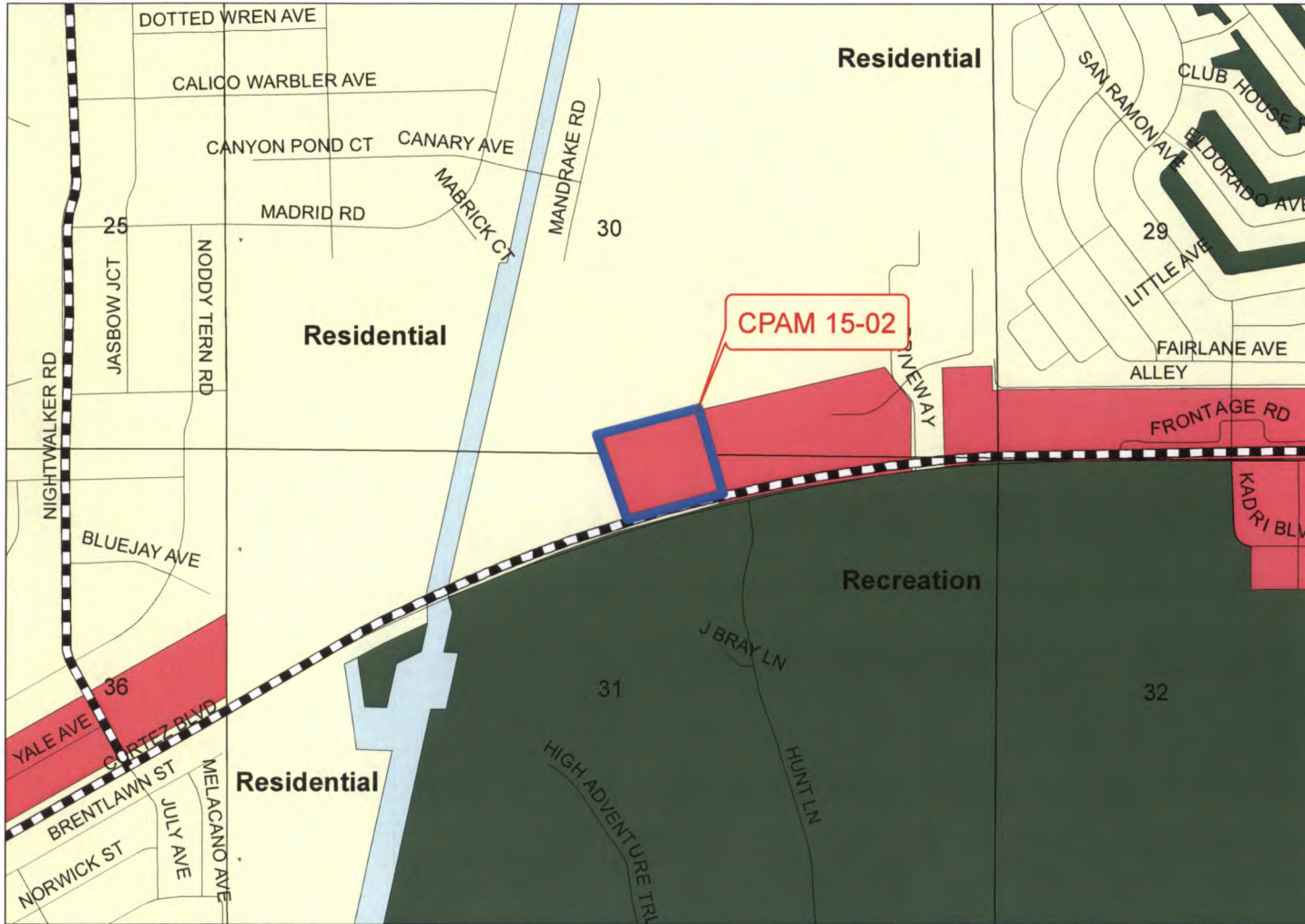
Date of mapping: 5/12/2016





# Hernando County Comprehensive Plan Map

Proposed CPAM 15-02  
Version Date: May 12, 2016



### Legend

- FLU Road
- FLU Riverine District
- Rural Cluster Overlay
- Regional Commercial

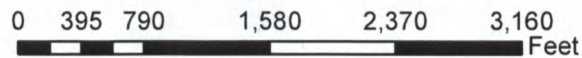
### Future Land Use

#### FLU

- CITY
- COMMERCIAL
- CONSERVATION
- EDUCATION
- INDUSTRIAL
- MINING
- PLANNED DEVELOPMENT
- PUBLIC FACILITY
- RECREATION
- RESIDENTIAL
- RURAL

## Future Land Use Map

PLEASE REFER TO THE TEXT PORTION OF THE COMPREHENSIVE PLAN IN CONJUNCTION WITH THE USE OF THE FUTURE LAND USE MAP SERIES.  
NOTE: THE RIVERINE DISTRICT IS SHOWN AS A LINE SETBACK PARALLEL TO THE WEEKI WACHEE, MUD AND WITHLACOOCHEE RIVERS.



Source: S:\Share\Planning\NewFLU\CPAM1502b\_Detail\_8x11.pdf  
Project: S:\Share\Planning\Zoning\ErikL\_Workspace\_S\CPAM Project\CPAM1502b\_8x11\_Detail.mxd  
Date of mapping: 5/12/2016

