

ORDINANCE NO.: 2008-20

AN ORDINANCE AMENDING THE HERNANDO COUNTY COMPREHENSIVE PLAN BY AMENDING SECTION E RELATING TO THE FUTURE LAND USE MAP; ADOPTING CPAM-08-04; PROVIDING FOR SEVERABILITY; AND PROVIDING FOR AN EFFECTIVE DATE.

WHEREAS, in 1985, the Florida Legislature adopted the Local Government Comprehensive Planning and Land Development Regulation Act as set forth in §§ 163.3161 through 163.3215 Florida Statutes (the “Act”); and,

WHEREAS, on June 7, 1989, the Board of County Commissioners adopted Ordinance 89-9 which adopted the Hernando County Comprehensive Plan, as such Plan or portions thereof have been subsequently amended (“Comprehensive Plan”); and,

WHEREAS, the instant request is for the Hernando County Board of County Commissioners (“BOCC”) to amend Section E of the County’s adopted Comprehensive Plan relating to the Future Land Use Map (a complete copy of the amendment is collectively attached as **Exhibit “A”** hereto and made a part hereof) and hereinafter referred to as CPAM-08-04; and,

WHEREAS, CPAM-08-04 is an amendment to the County’s Future Land Use Map involving land that is ten (10) acres or less in size and which has been determined by the Hernando County Planning Department to constitute a “small scale development amendment” based upon the criteria set forth in § 163.3187(1)(c), Florida Statutes; and,

WHEREAS, small scale development amendments are exempt from state and regional review pursuant to § 163.3187, Florida Statutes; and,

WHEREAS, the BOCC conducted a public hearing on August 13, 2008 in connection with the adoption of CPAM-08-04 as an amendment to the County’s adopted Comprehensive Plan.

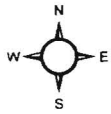
NOW THEREFORE:

BE IT ORDAINED BY THE BOARD OF COUNTY COMMISSIONERS OF HERNANDO COUNTY, FLORIDA:

SECTION 1. Adopting CPAM-08-04. CPAM-08-04, collectively attached as **Exhibit “A”** hereto, is hereby approved and adopted and the Hernando County Comprehensive Plan Future Land Use Map is amended accordingly, subject to Section 6 below.

SECTION 2. Execution. The Chairman of the Hernando County Board of County Commissioners is hereby authorized to execute this ordinance.

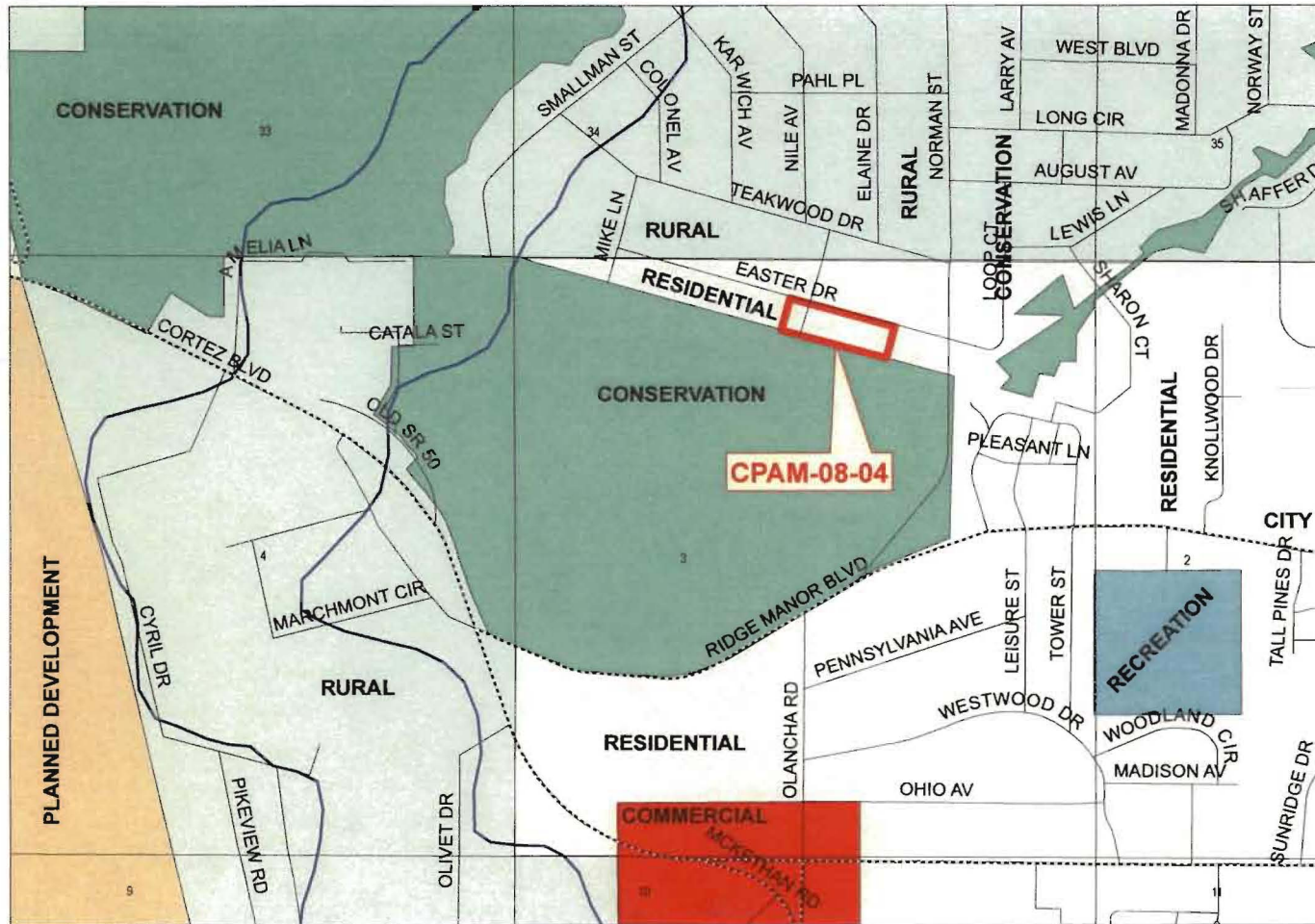
SECTION 3. Transmittal to Florida Department of Community Affairs. The County shall transmit an executed copy of this ordinance to the Florida Department of Community Affairs (DCA) as required by Rule Chapter 9J-11, Florida Administrative Code.



Hernando County Comprehensive Plan Map

Present / Current CPAM-08-04

Version Date: 5/22/08



Legend

- FLU Road
- FLU Riverine District
- [Hatched Box] Rural Cluster Overlay
- [Blue Box] Rural Infill Overlay
- [Dotted Box] Regional Commercial

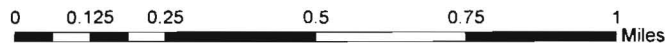
Future Land Use

FLU

- [White Box] CITY
- [Red Box] COMMERCIAL
- [Green Box] CONSERVATION
- [Light Blue Box] EDUCATION
- [Purple Box] INDUSTRIAL
- [White Box] MINING
- [Orange Box] PLANNED DEVELOPMENT
- [Dark Blue Box] PUBLIC FACILITY
- [Medium Blue Box] RECREATION
- [Light Green Box] RESIDENTIAL
- [Light Green Box] RURAL

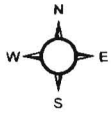
Future Land Use Map

NOTE: THE RIVERINE DISTRICT IS SHOWN AS A LINE SETBACK PARALLEL TO THE WEEKI WACHEE, MUD AND WITHLACOCHEE RIVERS. PLEASE REFER TO THE TEXT PORTION OF THE COMPREHENSIVE PLAN IN CONJUNCTION WITH THE USE OF THE FUTURE LAND USE MAP SERIES.



Source: F:\ARCDATA\NewFlu\CPAM0804a_Detail.pdf

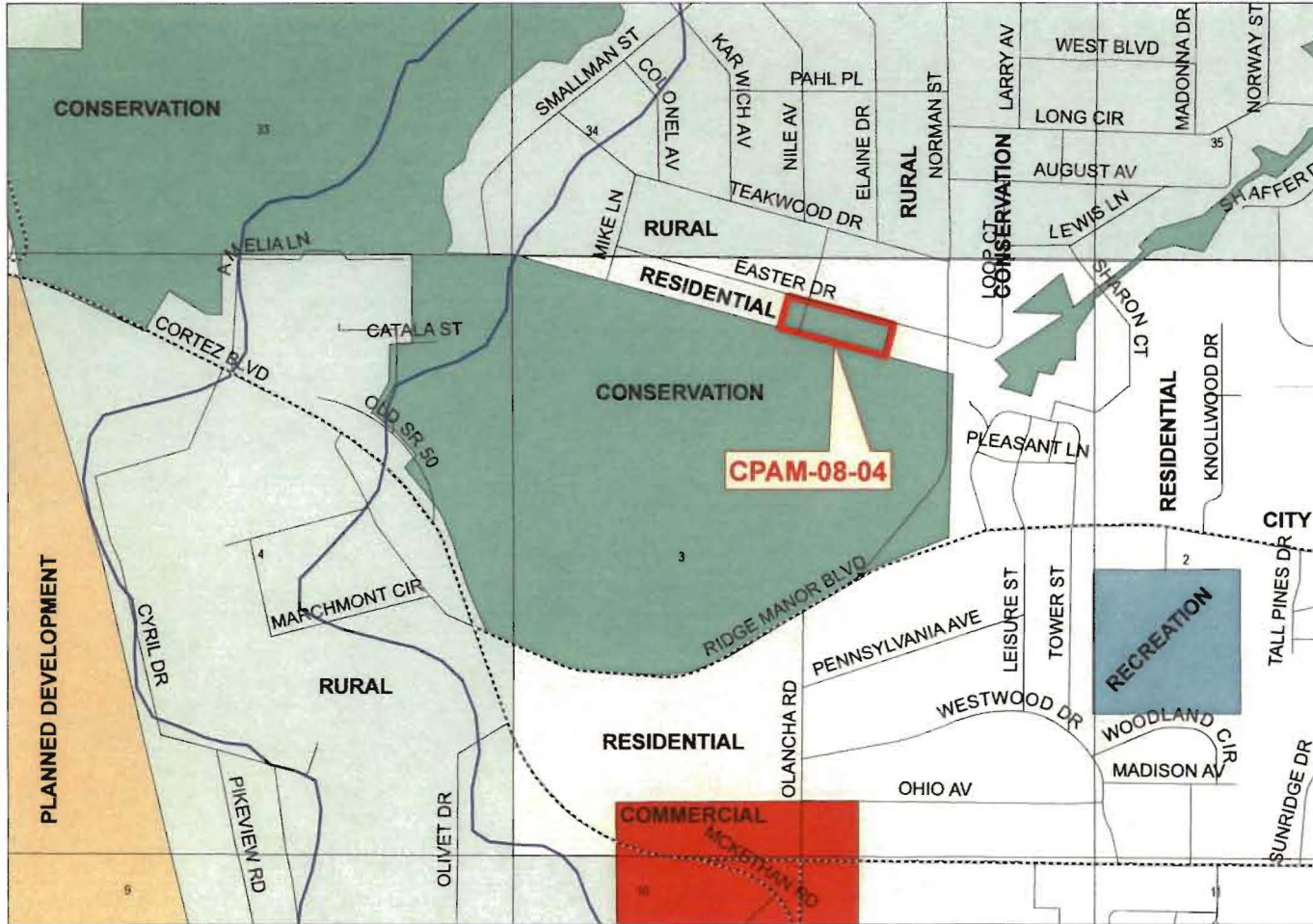
Date of mapping: 5/22/08



Hernando County Comprehensive Plan Map

Proposed CPAM-08-04

Version Date: 5/22/08



Legend

- FLU Road
- FLU Riverine District
- [Blue hatched box] Rural Cluster Overlay
- [Light blue hatched box] Rural Infill Overlay
- [Dark blue hatched box] Regional Commercial

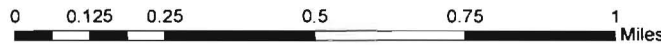
Future Land Use

FLU

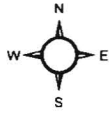
- [White box] CITY
- [Red box] COMMERCIAL
- [Green box] CONSERVATION
- [Light blue box] EDUCATION
- [Purple box] INDUSTRIAL
- [Light grey box] MINING
- [Yellow box] PLANNED DEVELOPMENT
- [Dark blue box] PUBLIC FACILITY
- [Teal box] RECREATION
- [White box] RESIDENTIAL
- [Light green box] RURAL

Future Land Use Map

NOTE: THE RIVERINE DISTRICT IS SHOWN AS A LINE SETBACK PARALLEL TO THE WEEKI WACHEE, MUD AND WITHLACOOCHEE RIVERS. PLEASE REFER TO THE TEXT PORTION OF THE COMPREHENSIVE PLAN IN CONJUNCTION WITH THE USE OF THE FUTURE LAND USE MAP SERIES.

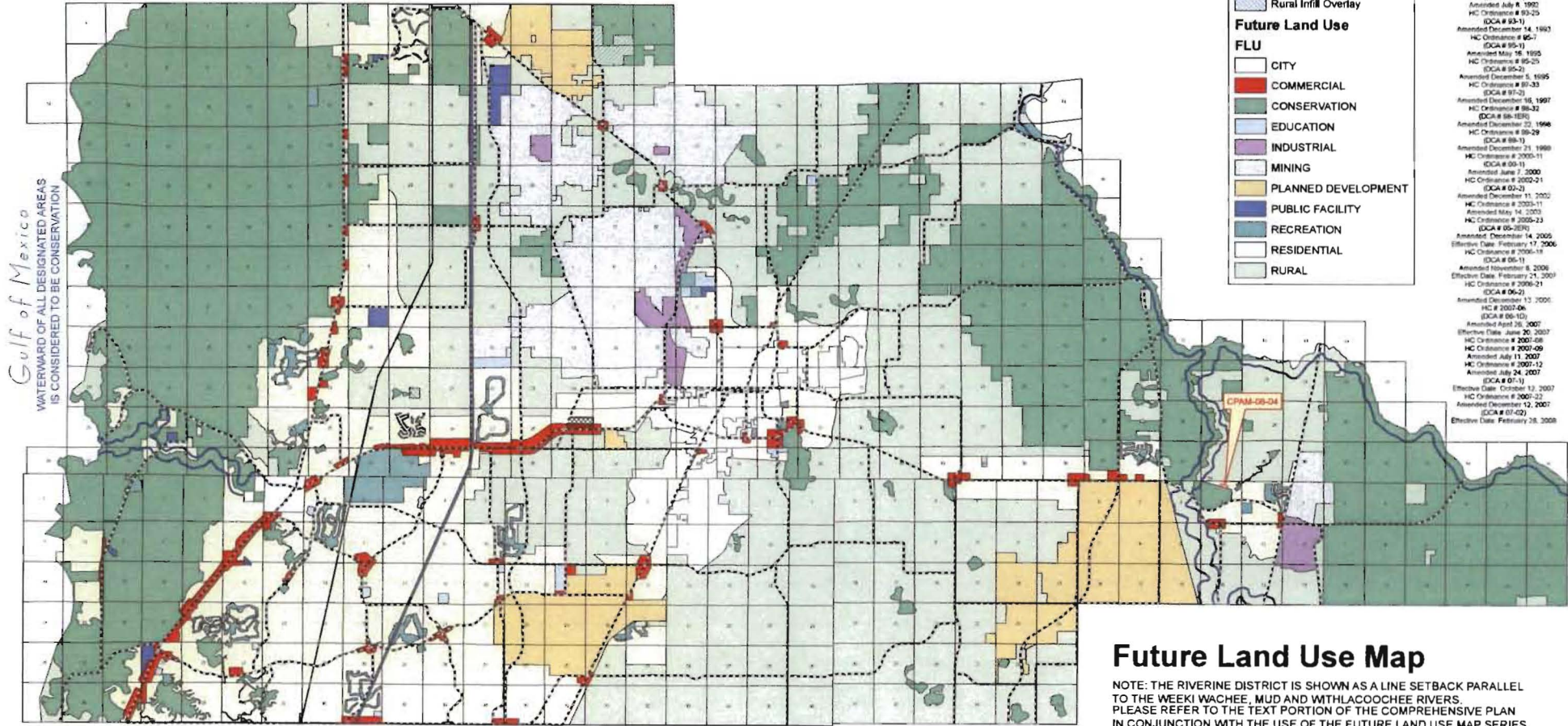


Source: F:\ARCDATA\NewFlu\CPAM0804b_Detail.pdf
Date of mapping: 5/22/08



Hernando County Comprehensive Plan Map

Proposed CPAM-08-04
Version date: May 22, 2008



Gulf of Mexico
WATERWARD OF ALL DESIGNATED AREAS
IS CONSIDERED TO BE CONSERVATION

Legend

- FLU Road
- FLU Riverine District
- Regional Commercial
- Rural Cluster Overlay
- Rural Infill Overlay

Future Land Use

FLU

- CITY
- COMMERCIAL
- CONSERVATION
- EDUCATION
- INDUSTRIAL
- MINING
- PLANNED DEVELOPMENT
- PUBLIC FACILITY
- RECREATION
- RESIDENTIAL
- RURAL

Future Land Use
Adopted / Amended History

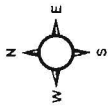
- HC Ordinance # 88-6
- Amended June 7, 1988
- HC Ordinance # 90-21
- (DCA # 90-2)
- Amended November 14, 1990
- HC Ordinance # 91-30
- (DCA # 91-1)
- Amended October 23, 1991
- HC Ordinance # 91-39
- (DCA # 91-2)
- Amended December 18, 1991
- HC Ordinance # 92-9
- (DCA # 92-1)
- Amended July 8, 1992
- HC Ordinance # 93-25
- (DCA # 93-1)
- Amended December 14, 1993
- HC Ordinance # 95-7
- (DCA # 95-1)
- Amended May 16, 1995
- HC Ordinance # 95-23
- (DCA # 95-2)
- Amended December 8, 1995
- HC Ordinance # 97-33
- (DCA # 97-3)
- Amended December 16, 1997
- HC Ordinance # 98-32
- (DCA # 98-18)
- Amended December 22, 1998
- HC Ordinance # 99-29
- (DCA # 99-1)
- Amended December 21, 1999
- HC Ordinance # 2000-11
- (DCA # 00-2)
- Amended June 7, 2000
- HC Ordinance # 2002-21
- (DCA # 02-2)
- Amended December 11, 2002
- HC Ordinance # 2003-11
- Amended May 14, 2003
- HC Ordinance # 2005-23
- (DCA # 05-26)
- Amended December 14, 2005
- Effective Date: February 17, 2006
- HC Ordinance # 2006-18
- (DCA # 06-1)
- Amended November 8, 2006
- Effective Date: February 21, 2007
- HC Ordinance # 2006-21
- (DCA # 06-2)
- Amended December 13, 2006
- HC # 2007-06
- (DCA # 06-10)
- Amended April 26, 2007
- Effective Date: June 20, 2007
- HC Ordinance # 2007-08
- HC Ordinance # 2007-09
- Amended July 11, 2007
- HC Ordinance # 2007-12
- Amended July 24, 2007
- (DCA # 07-1)
- Effective Date: October 3, 2007
- HC Ordinance # 2007-22
- Amended December 12, 2007
- (DCA # 07-02)
- Effective Date: February 28, 2008



Source: F:\ARCDATA\NewFlu\CPAM0804.pdf
Date of mapping: 5/22/08

Future Land Use Map

NOTE: THE RIVERINE DISTRICT IS SHOWN AS A LINE SETBACK PARALLEL TO THE WEEKI WACHEE, MUD AND WITHLACOOCHEE RIVERS. PLEASE REFER TO THE TEXT PORTION OF THE COMPREHENSIVE PLAN IN CONJUNCTION WITH THE USE OF THE FUTURE LAND USE MAP SERIES.



CPAM-08-04

Photo date: 2007

