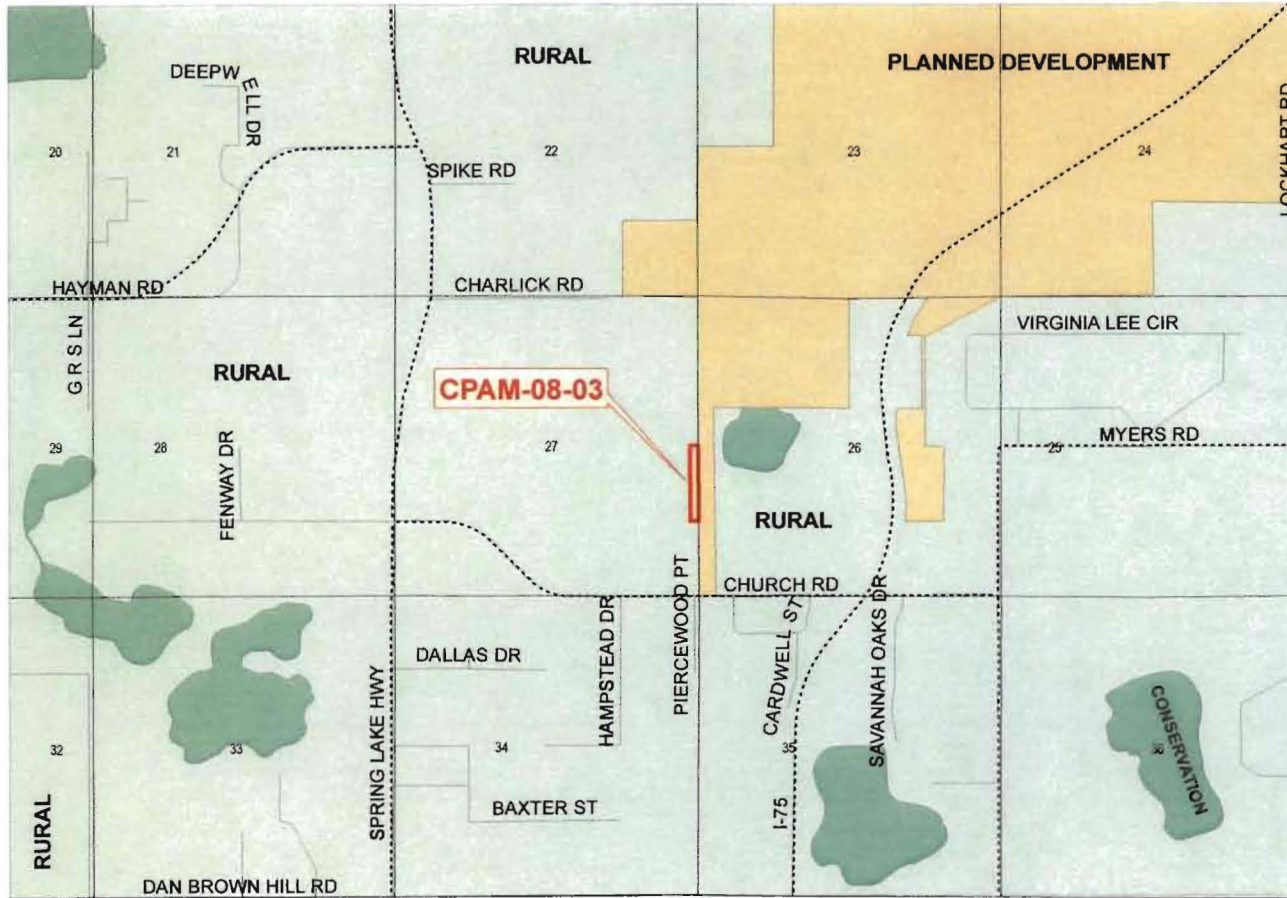


Hernando County Comprehensive Plan Map

Proposed CPAM-08-03
Version Date: 5/22/08



PASCO COUNTY

Legend

- FLU Road
- FLU Riverine District
- Rural Cluster Overlay
- Rural Infill Overlay
- Regional Commercial

Future Land Use

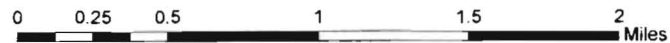
FLU

- CITY
- COMMERCIAL
- CONSERVATION
- EDUCATION
- INDUSTRIAL
- MINING
- PLANNED DEVELOPMENT
- PUBLIC FACILITY
- RECREATION
- RESIDENTIAL
- RURAL

PASCO COUNTY

Future Land Use Map

NOTE: THE RIVERINE DISTRICT IS SHOWN AS A LINE SETBACK PARALLEL TO THE WEEKI WACHEE, MUD AND WITHLACOCHEE RIVERS. PLEASE REFER TO THE TEXT PORTION OF THE COMPREHENSIVE PLAN IN CONJUNCTION WITH THE USE OF THE FUTURE LAND USE MAP SERIES.

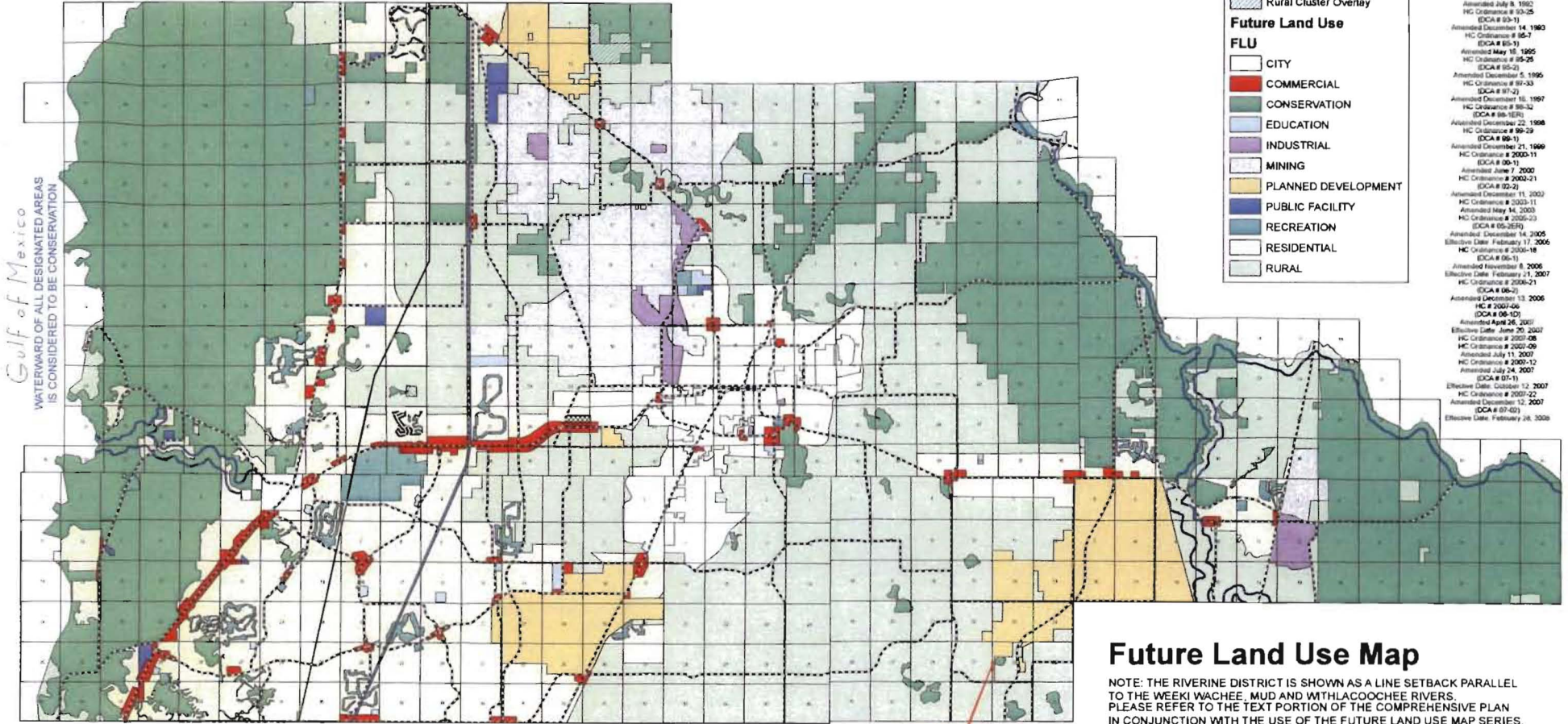


Source: F:\ARCDATA\NewFlu\CPAM0803b_Detail.pdf
Date of mapping: 5/22/08



Hernando County Comprehensive Plan Map

Proposed CPAM-08-03
Version date: May 22, 2008



Legend

- FLU Road
- FLU Riverine District
- Regional Commercial
- Rural Infill Overlay
- Rural Cluster Overlay

Future Land Use

FLU

- CITY
- COMMERCIAL
- CONSERVATION
- EDUCATION
- INDUSTRIAL
- MINING
- PLANNED DEVELOPMENT
- PUBLIC FACILITY
- RECREATION
- RESIDENTIAL
- RURAL

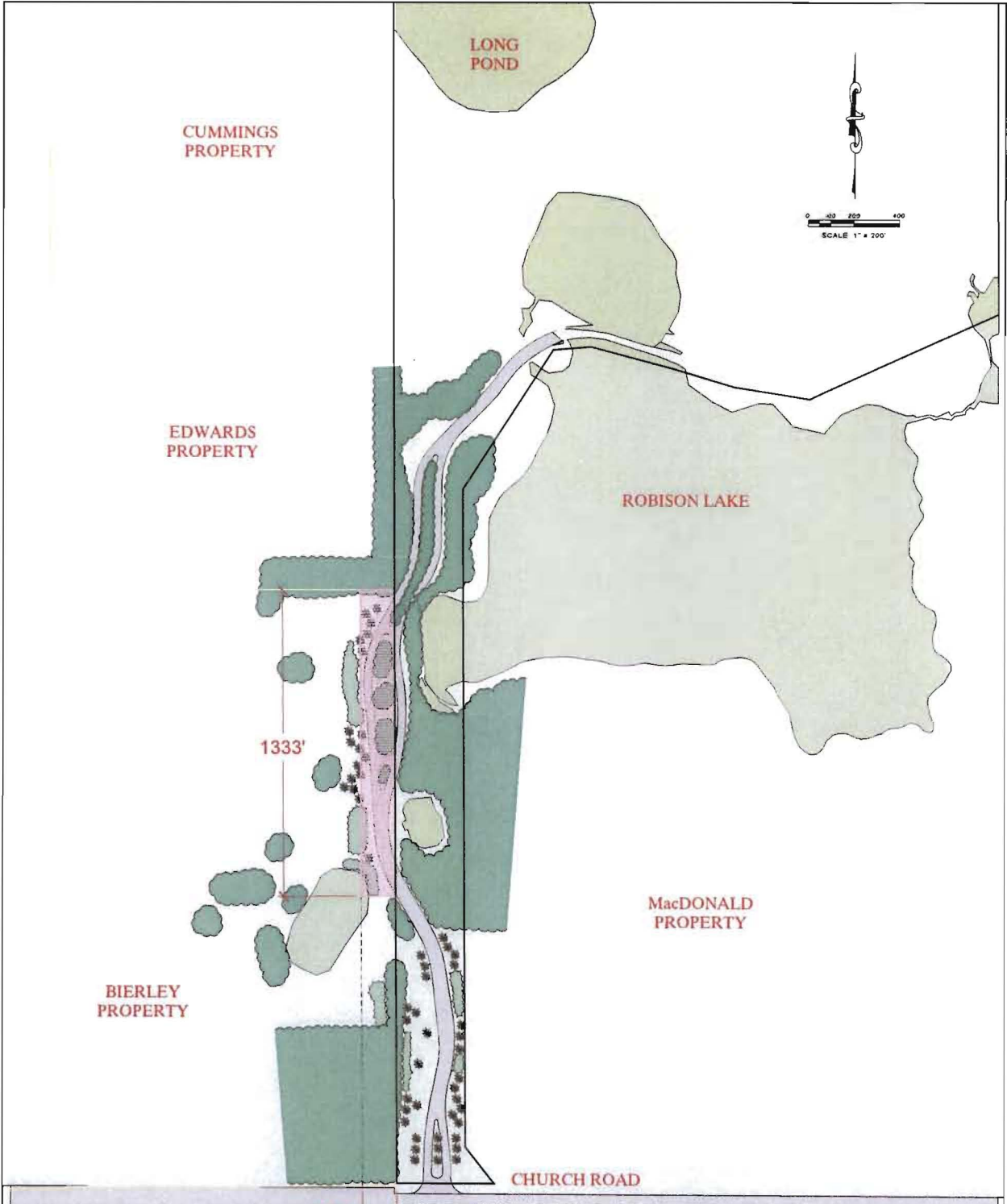
Future Land Use
Adoption / Amendment History
HC Ordinance # 89-8
Adopted June 7, 1989
HC Ordinance # 90-21
(OCA # 90-2)
Amended November 14, 1990
HC Ordinance # 91-32
(OCA # 91-1)
Amended October 23, 1991
HC Ordinance # 91-36
(OCA # 91-2)
Amended December 18, 1991
HC Ordinance # 92-6
(OCA # 92-1)
Amended July 9, 1992
HC Ordinance # 93-25
(OCA # 93-1)
Amended December 14, 1993
HC Ordinance # 94-7
(OCA # 94-1)
Amended May 18, 1995
HC Ordinance # 95-25
(OCA # 95-2)
Amended December 5, 1995
HC Ordinance # 97-33
(OCA # 97-2)
Amended December 18, 1997
HC Ordinance # 98-32
(OCA # 98-10)
Amended December 22, 1998
HC Ordinance # 99-29
(OCA # 99-1)
Amended December 21, 1999
HC Ordinance # 2000-11
(OCA # 00-1)
Amended June 7, 2002
HC Ordinance # 2002-23
(OCA # 02-2)
Amended December 11, 2002
HC Ordinance # 2003-11
Amended May 14, 2003
HC Ordinance # 2005-23
(OCA # 05-25)
Amended December 14, 2005
Effective Date: February 17, 2006
HC Ordinance # 2006-18
(OCA # 06-1)
Amended November 8, 2007
Effective Date: February 21, 2007
HC Ordinance # 2008-21
(OCA # 08-2)
Amended December 13, 2008
HC # 2009-06
(OCA # 09-10)
Amended June 26, 2007
Effective Date: June 20, 2007
HC Ordinance # 2007-06
HC Ordinance # 2007-09
Amended July 11, 2007
HC Ordinance # 2007-12
Amended July 24, 2007
(OCA # 07-1)
Effective Date: October 12, 2007
HC Ordinance # 2007-22
Amended December 12, 2007
(OCA # 07-02)
Effective Date: February 26, 2008

Future Land Use Map

NOTE: THE RIVERINE DISTRICT IS SHOWN AS A LINE SETBACK PARALLEL TO THE WEEKI WACHEE, MUD AND WITHLACOOCHEE RIVERS. PLEASE REFER TO THE TEXT PORTION OF THE COMPREHENSIVE PLAN IN CONJUNCTION WITH THE USE OF THE FUTURE LAND USE MAP SERIES.



Source: F:\ARCDATA\NewFlu\CPAM0803.pdf
Date of mapping: 5/22/08



4.55 Acres

Attachment C

LEGEND

- ENTRY CORRIDOR PARCEL (±4.55 ACRES)
- WETLANDS
- OAKS, MAGNOLIAS, HOLLIES
- EXISTING VEGETATION
- BALD CYPRESS - RANDOM SPACING STAGGERED HEIGHT
- SLASH PINE - RANDOM SPACING

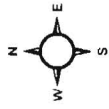
PREPARED FOR
SIERRA PROPERTIES
 250 GIBBS ROAD, AVELAND, FL 33511
 TAMPA, FLORIDA 33611

PREPARED BY:

King
 ENGINEERING ASSOCIATES, INC.
 4815 W. BOULEVARD, SUITE 200
 TAMPA, FLORIDA 33609
 PHONE: 813.988.8884
 FAX: 813.988.8882
 EMAIL: king@kingeng.com

NOTE: THIS IS A PRELIMINARY LAYOUT AND IS FOR ILLUSTRATIVE PURPOSES ONLY. THE LATEST AVAILABLE GIS DATA HAS BEEN UTILIZED. HOWEVER, SOME MEASUREMENTS MAY VARY FROM THE ACTUAL. THE EXACT BOUNDARY IS SUBJECT TO CHANGE BASED ON FINAL ENGINEERING, FIELD SURVEY, ENVIRONMENTAL AND GOVERNMENTAL APPROVALS.

NO.	DATE	DESCRIPTION	BY	CHKD.
3	10-31-07	REVISED PER CLIENT COMMENTS	CAC	SM
2	10-21-07	REVISED PER CLIENT COMMENTS	CAC	SM
1	09-12-07	REVISED PER PARCEL B SWATCH AND LEGAL	CAC	SM
0	08-01-07	ISSUED FOR PERMITTING	CAC	SM



CPAM-08-03

Photo date: 2007

